

6300 Oberon NEMA Enclosure Assembly Instructions



The Leader in Enterprise Wireless Network Monitoring

Assembly Components

- Polycarbonate enclosure (base and lid), Oberon, Inc Model 1020-00
 - (4) M4 metric pan head machine screws (included in Oberon enclosure)
- (3) #6-32 x 1/4" Screws (included in Oberon enclosure)
- 7SIGNAL Eye 7S6300
- 7SIGNAL Eye Plastic Mounting Bracket (included with 7S6300)
- 7SIGNAL Oberon 1020-00 Mounting T-Bracket, Part #ME010089
- (1) #6-32 x 3/8" sheet metal screw
- Screwdriver(s)

Other

- Drill for cable ingress and cable hole sealing materials

1. Install T-Bracket on 6300 Plastic Mounting Bracket

Install T-Bracket on the topside of the 6300 T-Rail Plastic Mounting Bracket by pressing down between tabs and twisting until side latches snap in place (*Fig. 2*)

Fig. 1

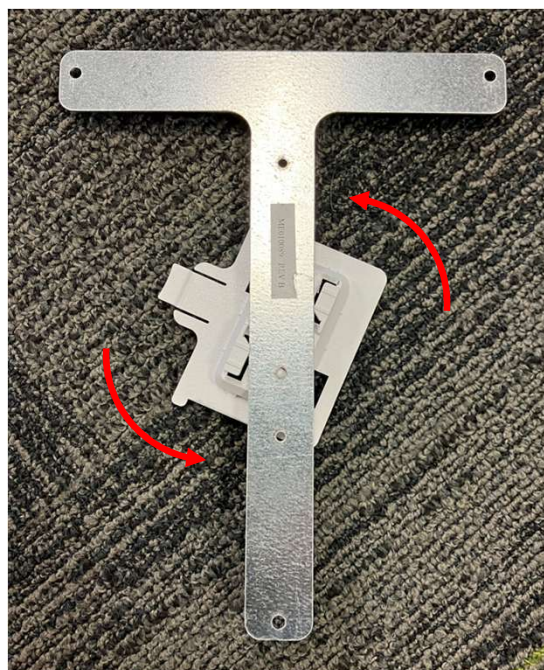
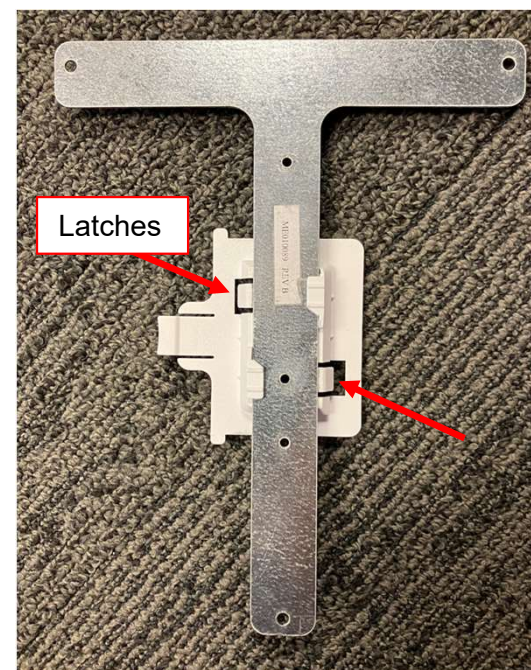
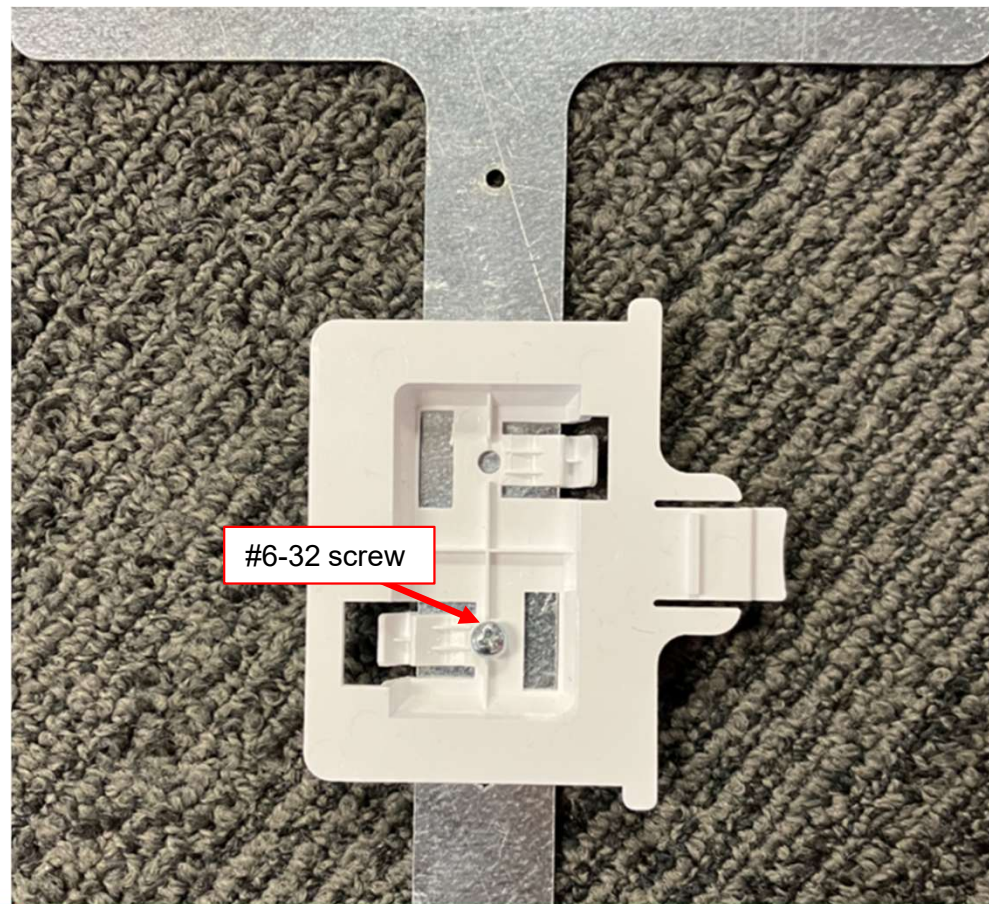


Fig. 2



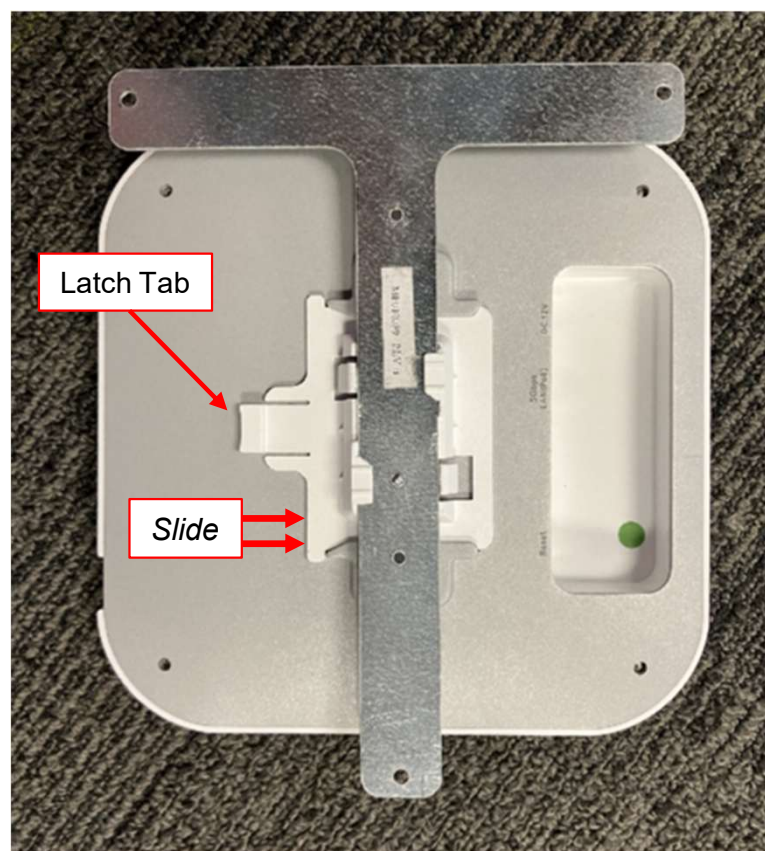
1. Install T-Bracket on Eye 6300 Mounting Bracket

Flip over T-Bracket assembly and fasten together with a #6-32 screw on the top side (if necessary to keep it from sliding)



2. Install 7SIGNAL Mounting Bracket Assembly on 6300

Slide the Plastic Mounting Bracket (to the right) into the slots on the bottom of the 6300 until it hits the stops and the latch tab clicks into the slot on the bottom of the 6300.



3. Install 7SIGNAL Eye 6300 into Oberon NEMA Box

- Plug in Cables as needed.
- Flip Over the 6300 & T-Bracket Assembly.
- Screw T-Bracket (and Eye 6300) into Oberon Box Bottom Bosses using three (3) #6-32 x 1/4" screws where indicated.



4. Seal the Enclosure with Eye 6300 Mounted Inside

- Place the lid on the base then secure it with the four (4) pan head machine screws provided with the enclosure.
- The screws should be tightened to 8 in-lbs to properly seal the enclosure.
- Do not over tighten. Make sure the gasket is properly seated prior to tightening.

