

## 7Signal Sapphire Eye 6200 Ceiling Mount Installation Instructions

The Sapphire Eye 6200 comes with the mounting bracket (7Signal part number ME010086-01) included and installed on the feet of the unit, along with two ceiling T-Bar rail clips (7Signal P/N ME010076). The top arrow points to where one foot retains the bracket with its shoulder screw slid into teardrop hole in the bracket.

The side arrow points to the metal Retention Detent Tab in the bracket. It will click over the Retention Bar in the plastic bottom

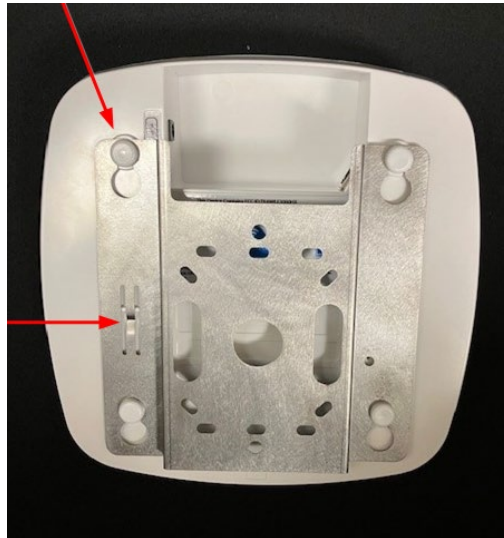


Figure 4.4.4-1 Mounting Bracket on SE6200

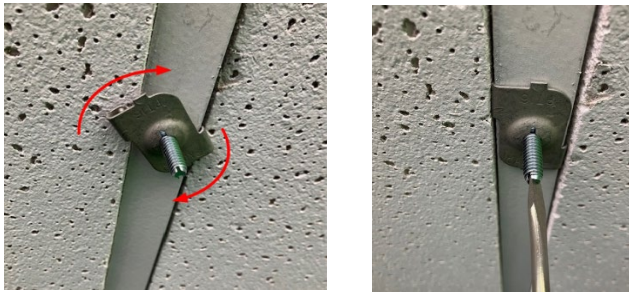
Remove the bracket from the unit in order to mount it to the wall or ceiling. Slide the bracket up until it allows the foot pads to drop through the bracket holes for removal.

One ceiling mount option may be to screw the bracket to the ceiling or a beam. Alternatively, the bracket hole pattern can be lined up with holes in a ceiling work box similar to a light fixture workbox. Here, we'll demonstrate mounting the bracket to a drop ceiling T-Bar rail using the too included twist clips and nuts.



7Signal Part No. ME010076

Install the two twist clips onto the ceiling T-Bar and tighten the screw flat head to the T-Bar as shown.

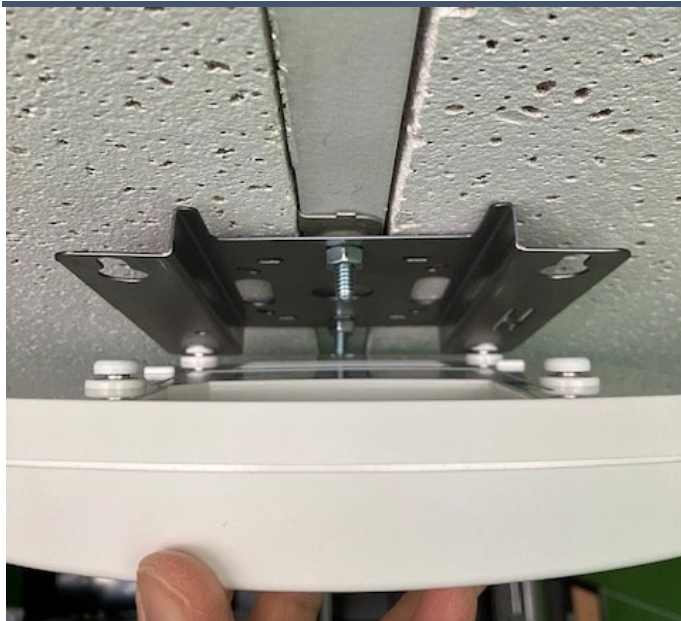


Install the bracket onto two twist clip 1/4" studs using the included 1/4" hex nuts as shown



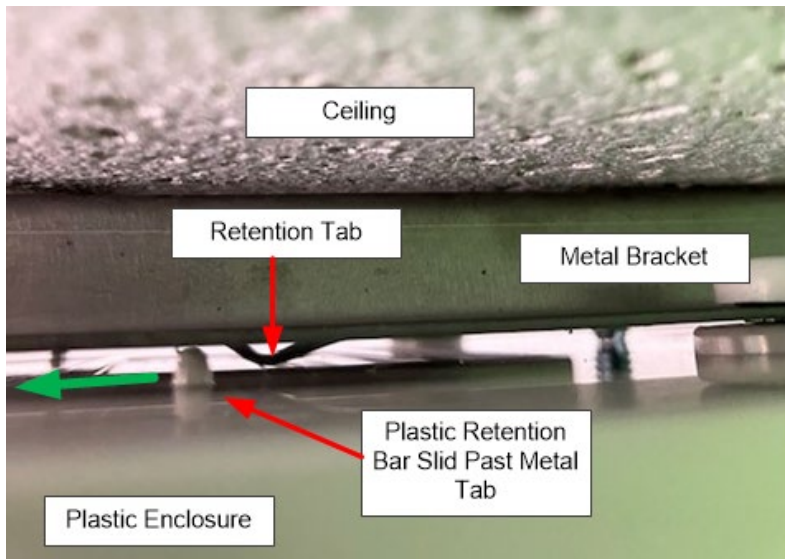
Plug in the Ethernet cable and other cables as required before installing the unit on the bracket.

Line up the four shoulder screw-feet with the four large openings in the bracket and push all four feet straight up through the large holes in the bracket.



Then hold the bracket with one hand and slide the Sapphire Eye 6200 forward with the other hand so that the foot screws go into the narrower slots in the bracket teardrop holes and capture the feet in the bracket.

Verify the Retention Detent Tab on the bracket clicks over the plastic Retention Bar in the plastic housing as show in the side view close up below.



After hearing it snap in place, visually verify the unit is locked in place with the Plastic Retention Bar slid past the metal Retention Tab detent.

After the unit is installed, check it is secure by pulling back on the unit to insure it is locked and in place before leaving it.

7Signal, Inc  
6155 Rockside Rd, Ste 110  
Independence, OH 44131  
Phone: (216) 777-2900